



RADS

Remote Acquisition and
Display System

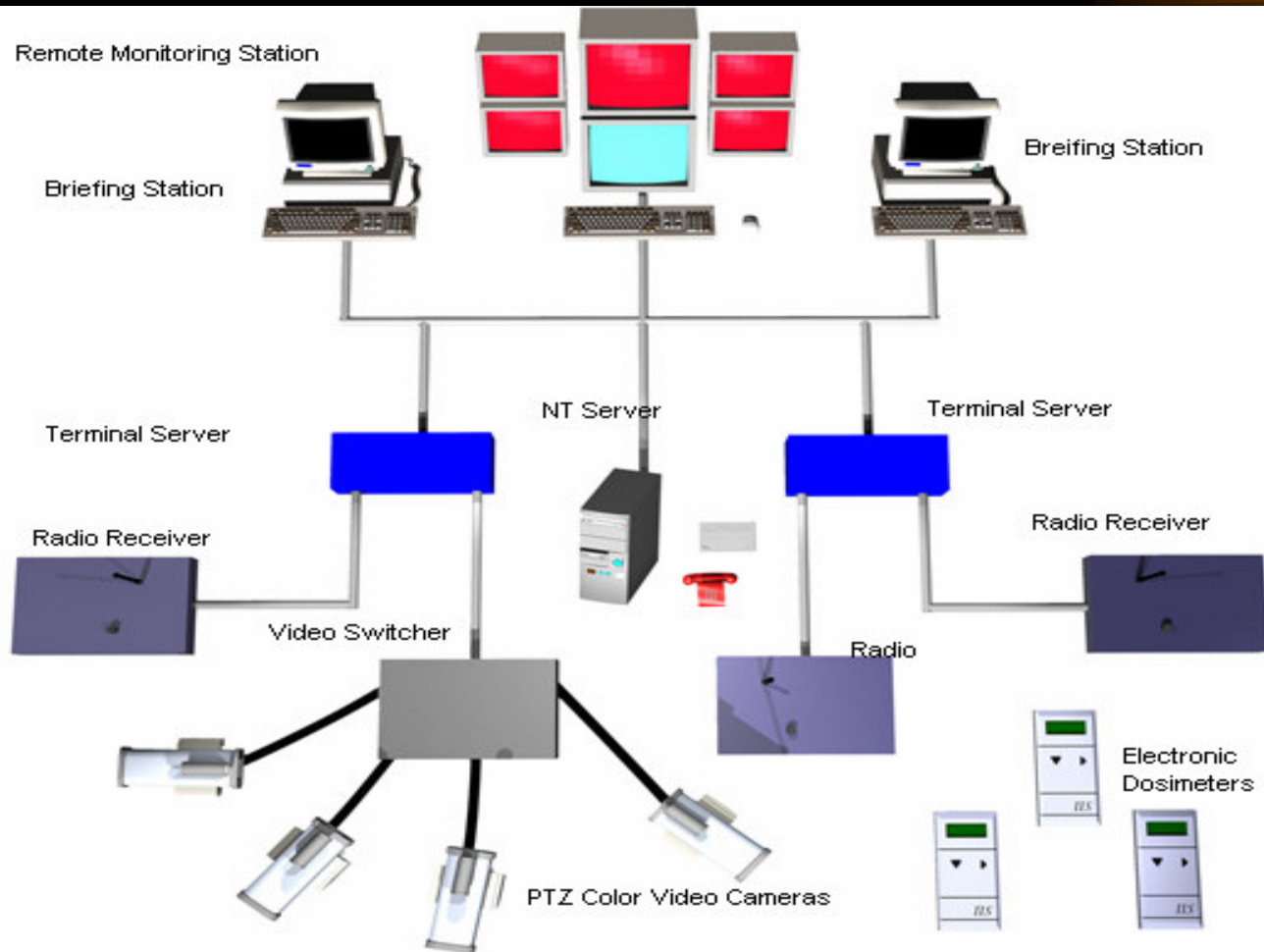
RADS

Remote Acquisition and Display System

The RADS System is a TCP/IP based network system used for Radio Frequency Telemetry Data Management and to provide for a Paperless Survey Documentation Platform

RADS is a software package, which is integrated with and controls hardware peripherals. This control allows Remote Monitoring with video, radiological, and audio interfaces.

System Layout



RADS Value added



- This is user Friendly Software developed by RP Technicians.
- RADS incorporates the tools needed to perform Radiological Job Coverage into one system.
- RADS reduces the number of RX Containment entries due to the extensive video and audio support provided in the RX Containment.
- RADS reduces Outage Exposure and Cost by reducing the number of Contract Technicians needed to cover the work

RADS Remote Acquisition and Display System



- The Industry Standard for Workstation Setup
- Ergonomically Correct Positioning
- Customizable to meet your needs

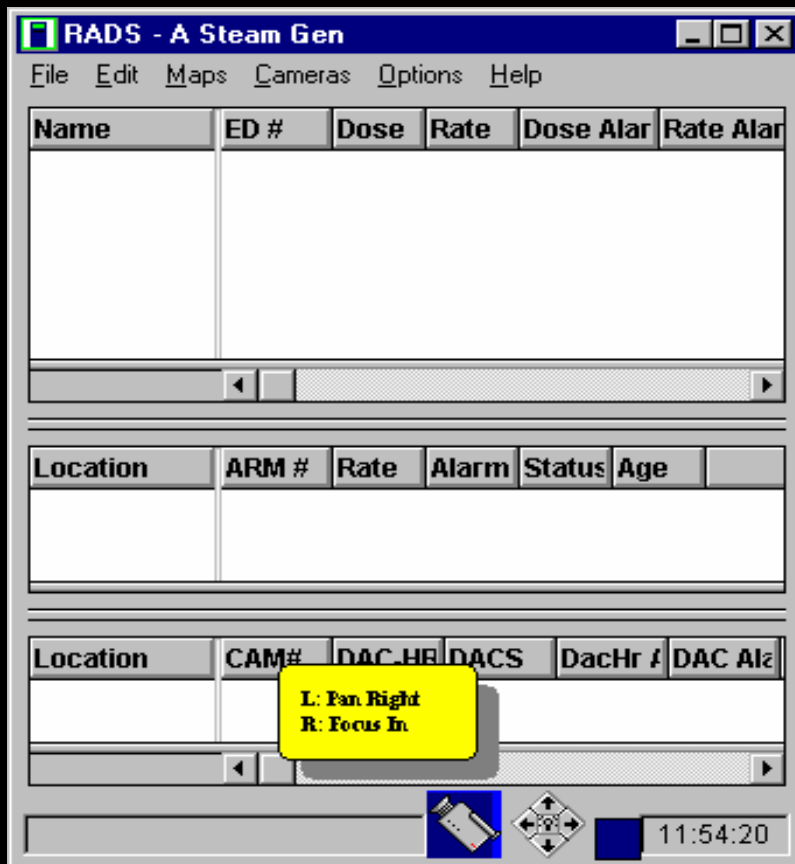
RADS




The Telemetry
Module

RADS

Remote Acquisition and Display System

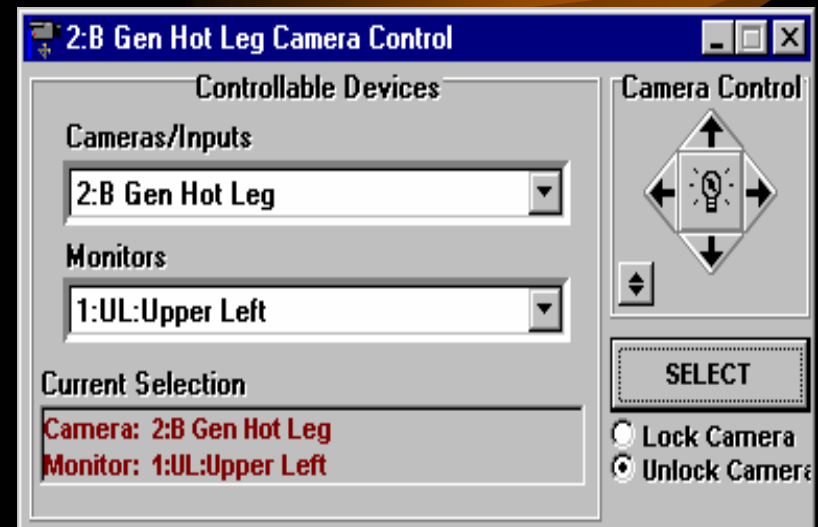


- Typical Job Window
- Fully Customizable
- Unlimited Number of Jobs
- Integrated Video and Audio Alarms  Double Click on Speaker
- On screen video controls
- Unlimited Job Devices for each job window

RADS

Remote Acquisition and Display System

- Full on-screen Camera controls with your mouse
- Up to Four Cameras per job window
- Camera Lock-out feature ensures positive control during critical evolutions



RADS

Remote Acquisition and Display System

Job Configuration - default

Description:
Defaults Entries for Test System

Associated Maps

| Display | Map File |
|-------------|-----------|
| Map 1 Plant | PLANT.BMP |
| Map 2 | |
| Map 3 | |
| Map 4 | |

Map Dir: C:\RADS\MAPS

Associated Cameras

- A. Stm Gen Pltfrm
- B. Gen Hot Leg**
- Pzr Cubicle
- D. RCP Seal

Auto Locate Start Up

Timeouts

Lost Contact in 120 secs

Alarm Options

- Sound on Alarm
- Open on Alarm
- Open On New Pers
- Sound on New Person

Setpoints

Alarm at > 80 % of setpoint

Alert at > 60 % of setpoint

Misc. Options

- Display Active Devices

Active Threshold 60 secs

Save Cancel

Job Configuration Screen

- Associated Maps
- Timeouts
- Alarm Options
- Camera Association
- Alarm Thresholds
- Display Active Device

RADS

Remote Acquisition and Display System

Edit Job default Devices

Auto By

RWP/Task: [] []

Location: []

Badge: []

Default Job

Available List

All Active Detectors

All Personnel EDs

All ARMs

All CAMs

RWP/Task: [] []

Location: []

Current

111111
111222
111333

Available Detectors:


[]

OK Cancel

Edit Job Devices

- Lists active Devices
- Drop and Drag to current Job
- Set Auto Log criteria
- Define Default Job

RADS

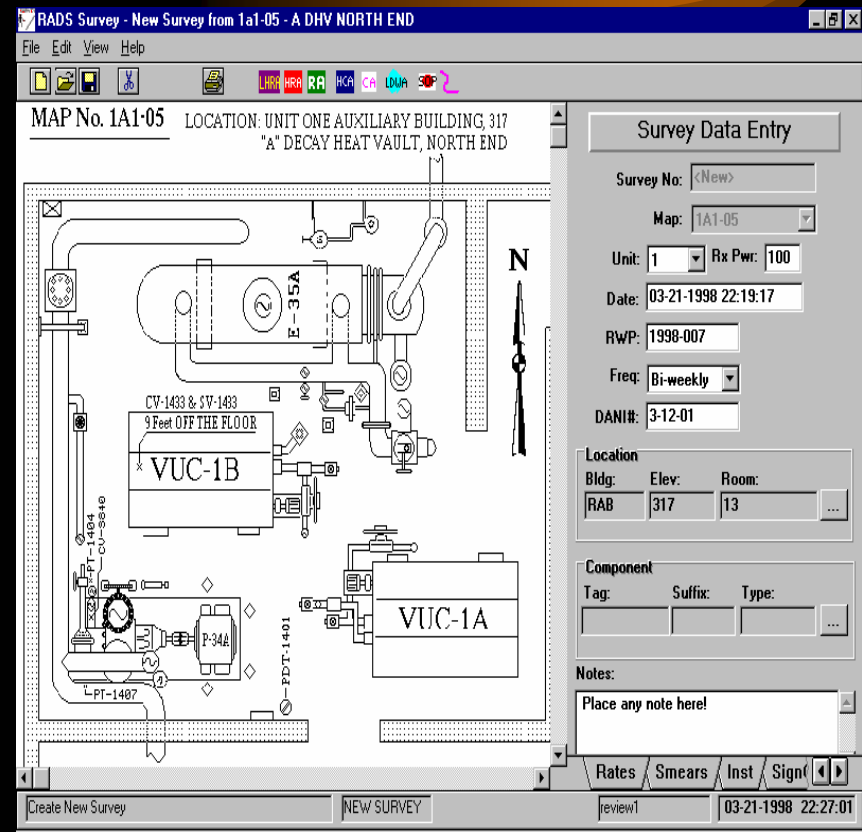


The Survey
Module

RADS Remote Acquisition and Display System

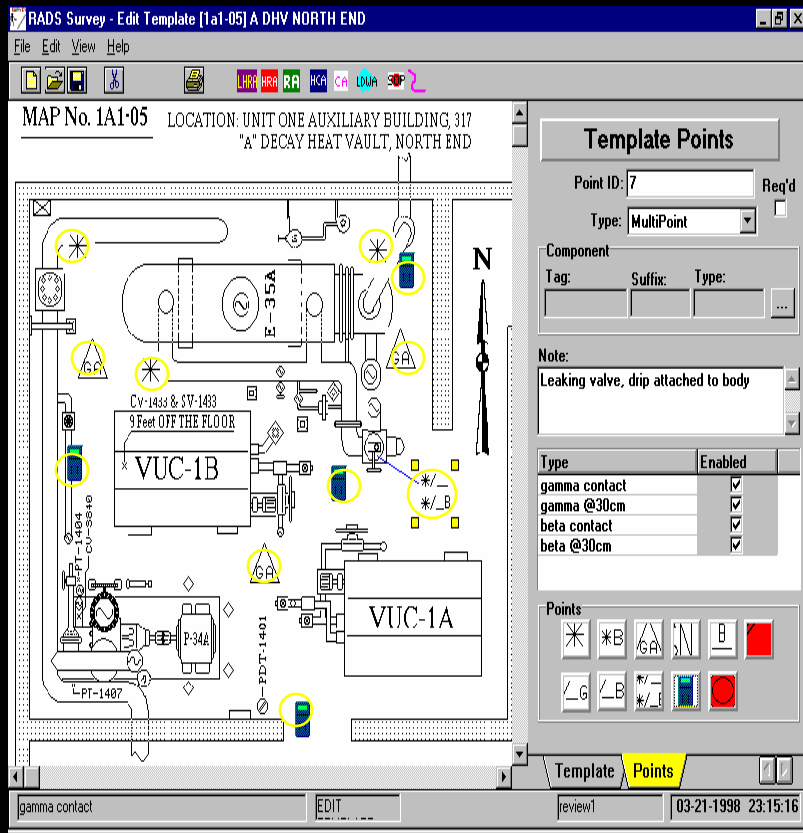
Paperless Survey System

- Three Layer Format
 - Base Bitmap Image
 - Template Overlay
 - Survey Information
- WMS Data Base Link
- Telemetry System Link



RADS

Remote Acquisition and Display System



Template Design Screen

- Allows the placement of Required Points or Telemetry.
- Overlays Inserted to highlight locations only.

RADS

Remote Acquisition and Display System

The screenshot shows the RADS Survey software interface. The main window displays a floor plan of an auxiliary building with various radiation data points. The data points are represented by small icons with numerical values and units. The interface includes a menu bar (File, Edit, View, Help), a toolbar, and a status bar. The data entry panel on the right contains the following information:

Data Point Entry

Point ID: 7
Type: MultiPoint

Component

Tag: Suffix: Type: ...

Note:
Leaking valve, drip attached to body

Instrument: [Dropdown]

| Type | Value | Engr | Enl |
|---------------|-------|---------|-----|
| gamma contact | 5.0 | mrem/hr | ✓ |
| gamma @30cm | 2.0 | mrem/hr | ✓ |
| beta contact | 12.0 | mrem/hr | ✓ |
| beta @30cm | 10.0 | mrem/hr | ✓ |

Data Point Types

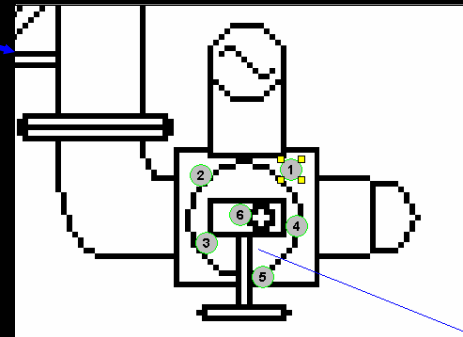
[Icons for various data point types]

Rates Smears Inst Sign

MultiPoint NEW SURVEY review1 03-22-1998 14:29:46

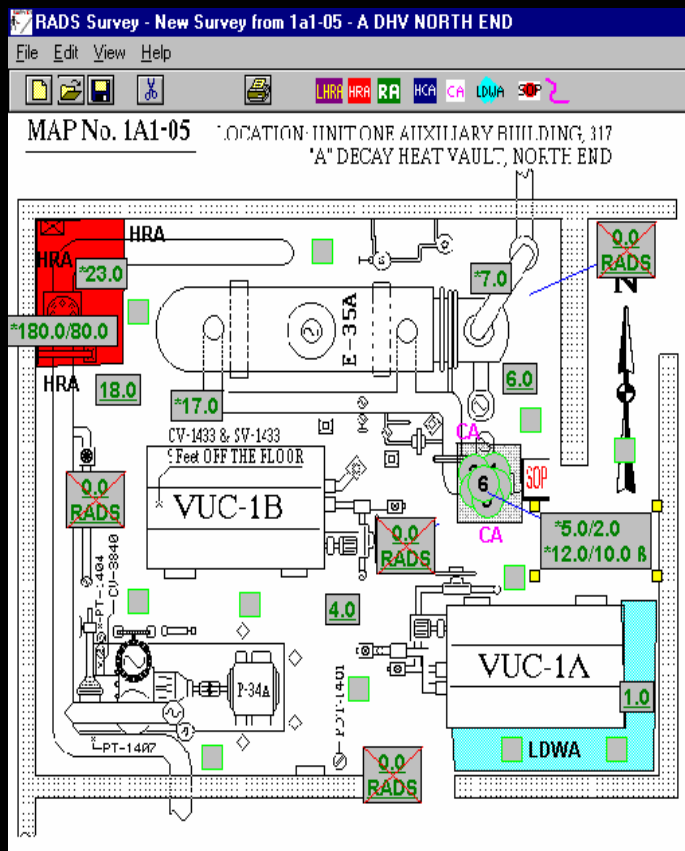
Start Microsoft PowerPoint - [rad... RADS Survey - New ... 2:29 PM

- Blow up feature for details
- Link to Component Data Base
- Basic Windows Drawing Tools



RADS

Remote Acquisition and Display System



- Completed Survey with color graphics
- Color Scheme can be changed to meet your sites needs.

RADS Remote Acquisition and Display System

- Electronic signoff tied to your Network Login
- Text section for Supervisor and Technician Feedback
- All signature has hierarchy privileges assigned to them

The screenshot displays the 'Sign Off' window in the RADS system. The window title is 'Sign Off'. It contains a 'Status:' dropdown menu with options 'New', 'In-Progress', and 'Waiting Review'. The 'Last Status Change:' field shows '03-22-1998 14:15:17'. Below this is a 'Tech Feedback:' text area. At the bottom, there are fields for 'Technician:' (containing 'Review1_Cindy L.') and 'Reviewer:'. A navigation bar at the bottom includes buttons for 'Inst', 'SignOff', and 'Upload'. The status bar at the very bottom shows 'review1' and '03-22-1998 14:52:23'.

RADS

Remote Acquisition and Display System

Site Support

- Detailed User's Manual
- Detailed Technical Manual
- Phone support with Maintenance Agreement
- Customization available at your request.
- Turn-Key installation available.

RADS

Remote Acquisition and Display System

Future *RADS* Options

- ✓ RADS Paperless Survey Module
 - ✓ Transceiver Signal Strength Monitor
- E-Plan Simulator

WHY CHOOSE RADS



User Friendly, Developed by RP Techs

Fully Functional at Four Unique Sites

RADS has many outages of success

Network Compatible

RADS is Hardware Independent

Cost Benefit Payback in One Outage