

AccuWeather Customized Support to Nuclear Industries

by

John Maloney
AccuWeather

4th NUMUG Workshop
San Francisco, California
April 24-26, 1996

AccuWeather Customized Support to Nuclear Industries

AccuWeather is best known for the services it provides through the media. It serves more than 200 individual television stations, more than 400 radio stations, more than 200 newspapers plus the Associated Press, CBS, CNN, CompuServe and Prodigy. Less well known is that AccuWeather also provides a complete range of forecasts, data and graphics services geared to all different kinds of governmental and industrial clients all around the world. For example, AccuWeather prepares specialized products for ski resorts, trucking companies, agriculture, EMAs and literally dozens of other niches. One of the types of clients AccuWeather serves is the nuclear industry.

A number of utilities receive customized AccuWeather forecasts and warnings. For example, ConEd's Indian Point nuclear facility receives an hour by hour forecast of various parameters, including wind, precipitation and Pascual Stability Index, updated several times each day. (See **Figure 1**)

NRC Services

Perhaps the most far reaching and widest in scope among AccuWeather's nuclear clients is the U.S. Nuclear Regulatory Commission, which it has served since 1986. AccuWeather provides services to the NRC that they utilize from their Rockville, Maryland headquarters, their regional offices around the country and at any location in the field. The AccuWeather services are used on a routine basis, but are most important for NRC training and readiness exercises and in case of any sort of potential or actual radiological emergency. Several members of AccuWeather's meteorological staff and its computer staff have received certification from the NRC "For Successfully Completing the Protective Measures Response Technical Training Course".

AccuWeather provides two basic types of services to the NRC: a database of meteorological and hydrological information available for electronic access, known as AccuData®; and weather forecasts and consultation.

AccuData receives all standard government information as well as information from a number of commercial sources. AccuWeather system engineers have devoted more than 200 person years to developing the software to process and display the weather information that comes into its facility on a continuous basis.

Data Supply and Reliability

AccuData must always be accessible to both AccuWeather meteorologists and outside users and AccuWeather takes extraordinary steps to ensure that it is.

In order to assure reliability and uninterrupted of AccuWeather's data supply, several separate methods of acquiring data are used, including dedicated land lines and satellite delivery. Satellite delivery is achieved from 6 separate sources through a farm of 13 earth receiving stations located at AccuWeather's Global Data and Forecast Center in State College, Pennsylvania, tracking and

communicating with 5 different satellites.

Satellite data are received directly from NOAA weather satellites and government information services, some from the primary distributors of geophysical data via satellite. For example, AccuWeather receives high speed National Weather Service data circuits via dedicated landlines connected directly with the National Weather Service and via satellite delivery through both the Alden and GTE satellite systems. Several internal checking procedures are utilized to ensure accuracy, reliability, and consistency of data. There are numerous errors in the data that come from different parts of the country and the world, some due to faulty observations, some due to government encoding errors, and some due to transmission or line problems. AccuWeather's system for cross verifying data and for reviewing data for internal consistency is designed to find these errors. Review by AccuWeather meteorologists reconciles any deviations, and ensures the highest levels of accuracy.

This type of sophisticated combination of data sources, backup systems, internal cross-check routines, and meteorological review assures redundancy and reliability of the data supply at AccuWeather beyond any known level employed in government or industry.

System Reliability

AccuData itself has a reliability factor in excess of .99997, with an average down time of less than 15 minutes total per year. This reliability results from systems redundancy, systems quality and daily human evaluation; with 13 VAX computer systems running simultaneously in a cluster as backup to one another. Power to the units is protected against power surges and drops as well as lighting strike. Standard power sources from the local utility grid are backed up by dual-on-site power generating systems to carry the computer and communications system through long major power outages. Uninterruptable Power Supplies (UPS Systems) provide 30 minutes of system power, insulating the units from short-term standard power failure or fluctuation. AccuWeather remains isolated from power brownouts and blackouts even during extended periods of summer heat and air stagnation. The computer facility is housed in a secure concrete and concrete block structure which has six independent halon fire control systems and two separate environmental control systems.

Communications Reliability

Telephone access into the system is provided through a variety of methods: regular dial-in lines, 800 number access and Internet access. AccuWeather maintains several T1s through several different telephone switches with several different telephone service providers so that external users are always insured of access to the system.

The hardware configuration is continuously expandable and at the current usage level with 184 active ports for dial in, 1 out of every 624 calls placed into the system placed by external users receives a busy signal. When that happens, a redial get them into the system immediately.

AccuWeather also maintains a fully automated facsimile service bureau, which transmits weather data sets, maps, charts and graphics by facsimile and is available as an additional failsafe backup in case of computer failure by one of its clients.

AccuData Access

AccuData is accessed with a regular PC utilizing AccuWeather for Windows™ Software. The software features fully automated access of data and graphics and enables the user to specify desired products with a point and click interface while off-line. The software then dials into the database, accesses the products and stores them for off-line viewing. Alternatively, a user can choose to enter the system and browse weather information through the menu and help file system. In either case, the software enables pan and zoom, multiple product windows and display of loops of satellite and radar images, showing the movement of the weather.

The first screen on the AccuWeather for Windows Software is the *Advisor Window*. (See Figure 2) From this screen, there are four options: *Get a Forecast*, *Get Products*, *View/Edit a Request List* or *Browse AccuData*. With *Get a Forecast*, a subscriber is able to click on any state and then click on any desired county or city. He or she can then click on any desired products from the list on the lower left. Once this is done, these products will automatically be accessed and stored for review. (See Figure 3)

The *Get One or More Products* option gives a choice of a wide range of products such as NEXRAD Doppler radar, satellite images, National Weather Service forecasts and warnings, weather conditions and many other products. (See Figure 4)

Both *Get a Forecast* and *Get One or More Products* also give the option to save the particular request made for instant access in the future through the a *View/Edit Request List* choice from Advisor Window.

The fourth option from the Advisor Window is the *Log in and Browse AccuData* option, which automatically logs into AccuData and enables the user to acquire any desired products through their product access codes or to access products by using the menu and help file system. The main menu (See Figure 5) leads to submenus which in turn lead to any described product and options.

NRC Custom Menu

AccuWeather has developed a custom menu for the NRC which contains the products that NRC users most often want to see, and it is designed so that a totally inexperienced user can quickly and easily get the information needed in case of an emergency situation. (See Figure 6) Also included in the custom menu is a command that automatically gives a custom grouping of products for any desired nuclear power plant in the U.S., selected by the power plant code.

AccuData Products

There are more than 35,000 different types of products available for access on AccuData, updated continually to always include the most current information.

Among the products of most interest to the Nuclear Industry are:

- Tabular decoded weather conditions, including the Pasquill stability index, available for anyplace in the world. **(Figure 7)**
- Maps, available for any part of the world that show the wind direction and speed and other information aloft.
- An atmospheric sounding which shows the temperature and dew point, the wind direction and speed and variety of indices directly above any desired site in the world. **(Figure 8)**
- National Weather Service forecasts, warnings, advisories and discussions, all available as issued. **(Figure 9)**
- NEXRAD Doppler radar, the state-of-the-art system installed throughout the United States by the National Weather Service, Federal Aviation Administration and Department of Defense. Through AccuWeather's alliance with Unisys, the company that manufactured and installed these radars, all of the radar information is available in real time on AccuData. **(Figure 10)** A proprietary NEXRAD product developed by AccuWeather not only shows the intensity and location of precipitation but also shows the locations of severe weather and predictions in 15 minute intervals of its movement. **(Figure 11)**
- Lightning data, available in real time, showing the exact location of every lightning strike as it occurs. **(Figure 12)**
- Numerous different products that can be an aid in emergency decisions about hazards to transportation. For example, AccuWeather meteorologists prepare forecasts for every major highway and interstate in the country. They also prepare maps showing where disruptive weather is expected to occur. **(Figure 13)**
- A complete array of hydrological data, including river forecasts and stages.
- Satellite images for the entire world, available from AccuWeather's direct ingest satellite system. **(Figure 14)**
- Current and forecast weather maps created by AccuWeather meteorologists and graphic artists. **(Figure 15)**
- Highly detailed computer-generated forecasts containing predicted wind, precipitation, Pasquill Stability Index and other data, available for almost any location on earth. **(Figure 16)**
- AccuWeather's proprietary Advanced Map Plotting System™ (AMPSTM) makes available plots and/or analyses any desired weather data for any desired area on earth. Among the types of information available are current weather and computer-

generated forecasts. (Figure 17)

AccuWeather Forecasts/Consultation

The second type of service that AccuWeather provides to the NRC is consultation with its meteorologists. AccuWeather's 80 meteorologists are the greatest number of operational forecasters at one location anywhere in the world. They are on duty 24 hours a day, 365 days a year and even at 3 a.m. on Christmas Eve, there are more than 20 meteorologists on duty. AccuWeather meteorologists use AccuData in preparation of forecasts and serve clients in all parts of the United States and throughout the world, forecasting continuously for every area worldwide.

AccuWeather has developed a number of specialized techniques that enhance its forecast accuracy. Numerous studies have been conducted that show that AccuWeather's forecasts are the most accurate available from any source. Probably the greatest benefit of all of utilizing AccuWeather's services is the availability of its meteorologists for consultation at any time, day or night. This has been an extremely valuable benefit for the NRC on a number of occasions. For example, as Hurricane Andrew moved toward Louisiana, the NRC needed to make a decision about shutdown of a nuclear facility and evacuation of the surrounding area. Based on government forecasts a shutdown and an evacuation would have been necessary, but AccuWeather meteorologists assured the NRC that the storm would take a slightly different track and that this would not be necessary.

Other Services

In addition to the types of forecasts provided to the NRC, AccuWeather also makes a wide variety of different types of forecasts available to utility companies such as forecasts used for energy load calculations (Figure 18) and warnings that show the likelihood and effects of severe weather. (Figure 19)

In summary, AccuWeather has the capability to provide any type of weather service or product required by the nuclear industry, whether it is via its database or its professional staff of meteorologists, system engineers, programmers and graphic artists. In addition, AccuWeather has the organizational structure, system reliability, and communications systems to fully support this industry. At AccuWeather, we pride ourselves on our unique and accurate support to our customers. We strive to be the best, and we are the best.

ACCU-WEATHER INC.
 814-237-5803 ext 11
 FORECAST EXCLUSIVELY FOR
 CON ED-INDIAN POINT

DAY: Wednesday
 DATE: 10-APR-96
 TIME: 12:00 PM
 FCSTR: TD

TIME	WIND SPEED nearest 0.5mph	WIND DIRECTION nearest 5 degrees	PRECIPITATION hundredths of an inch per hour	DIFFUSION ESTIMATE a-g
1 PM	16.0	320	0.00	D
2 PM	16.0	320	0.00	D
3 PM	16.0	320	0.00	D
4 PM	16.0	310	0.00	D
5 PM	16.0	310	0.00	D
6 PM	15.0	310	0.00	D
7 PM	14.0	310	0.00	D
8 PM	13.0	310	0.00	D
9 PM	11.0	310	0.00	D
10 PM	10.0	310	0.00	D
11 PM	10.0	310	0.00	D
12 AM	10.0	310	0.00	D
1 AM	9.0	310	0.00	E
2 AM	9.0	310	0.00	E
3 AM	9.0	310	0.00	E
4 AM	8.0	310	0.00	E
5 AM	8.0	310	0.00	E
6 AM	8.0	310	0.00	D
7 AM	9.0	310	0.00	D
8 AM	9.0	310	0.00	C
9 AM	10.0	310	0.00	C
10 AM	10.0	310	0.00	C
11 AM	12.0	310	0.00	C
12 PM	12.0	300	0.00	C
1 PM	13.0	300	0.00	D
2 PM	13.0	290	0.00	D
3 PM	14.0	290	0.00	D

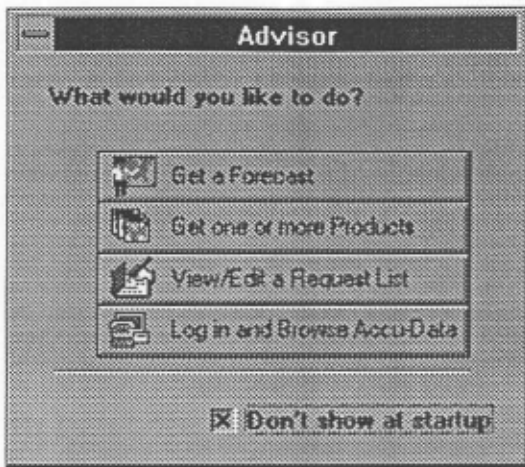


Figure 3

Forecast Setup

Select the State and County/City of interest.

State: Counties Cities

Alabama AUTAUGA

A forecast consists of the following AccuData products. Check the items that you want to include in this forecast and click the OK button.

- Local Doppler Radar
- Regional Satellite Image
- Regional Surface Map
- Local Text Warnings
- Local Zone Forecast
- Current Conditions
- Climatological Data

Graphics Resolution:

- Standard (16-color, 378x242)
- UltraGraphic (256-color, 768x486)

OK

Cancel

Product Code Dialog Box

Category:

- NEXRAD Doppler RADAR
- Satellite images
- Forecasts and Warnings
- Weather Maps
- Current Conditions
- Other Graphics
- Other Text/Data

Default State:

Product Description:

NEXRAD Doppler Radar

Product:

State: Site:

Resolution: Standard UltraGraphic

Version: TV Scientific

Looping: Create a Loop

Accu-Data, Accu-Weather's Interactive Database
Main Menu (MAIN)
10-APR-1996 18:41:44 GMT

- 1: OBS - US/World Weather Observations
- 2: SDE - Summaries, Discussions, Emergency Bulletins
- 3: FST - Forecast Products (Text and Computer)
- 4: TRP - Tropical Weather Information
- 5: HIS - Historic and Climatological Data
- 6: MIS - Miscellaneous Information
- 7: NEXRAD - NEXRAD Doppler Radar
- 8: COLOR - Color Graphics and Satellites
- 9: AMPS - Advanced Map Plotting System
- 10: MAP - Alphanumeric Maps and DIFAX Charts
- 11: CGP - Conversions and Specialized Packages
- 12: OTHER - Store, Sports, Lottery, News, TV Soaps, etc.
- 13: EXIT - Exit Menu System

For Help, Type ?

To Exit Menu and Help Files, Type <CTRL>Z

To Exit Programs, Type <CTRL>C

To Freeze Screen, Type <CTRL>S, To Resume Screen Movement, Type <CTRL>Q

To Check your Account Usage, Type MYTIME

To Offer Comments/Suggestions, Type FEEDBACK

Selection:

? nrc

NRC Custom Menu (NRC)
7-MAR-1996 20:31:22 GMT

- 1: SITE - Display NRC Site Codes
- 2: OBS/FCST - Display observations and forecasts for a site
- 3: AMPS_DATA_PLOTS - Display Obs. or Fcst. on a map - AMPS
- 4: COLOR_GRAPHICS - Display Color Graphics
- 5: SEVERE_WEATHER - Display Watches and Warnings
- 6: HURRICANES - Display Tropical Information
- 7: OTHER_SITE - Display obs/forecast for a site by lat/lon
- 8: EXIT - Exit Menu System

For Help, Type ?

To Exit Menu and Help Files, Type <CTRL>Z

To Exit Programs, Type <CTRL>C

To Freeze Screen, Type <CTRL>S

To Resume Screen Movement, Type <CTRL>Q

To Access Accu-Data Main Menu, Exit this menu and enter MENU at the '?' prompt.

To Return to this menu, enter NRC at the '?' prompt.

Selection: 7

Info for sites specified by latitude, longitude and width of area
7-MAR-1996 20:31:30 GMT

- 1: HOURLY - Hourly data
 - 2: FORECAST - Forecasts
 - 3: BOTH - Both Hourly Data and Forecasts
 - 4: TEMPMPAP - Create Custom AMPS Background
- Press <ENTER> To Go Back To Previous Menu

Selection: 1

SEARCH FOR TWO NEAREST STATIONS FROM A GIVEN LATITUDE AND LONGITUDE:

ENTER LATITUDE IN DECIMAL DEGREES (SOUTH IS NEGATIVE. ? FOR HELP): 35

ENTER LONGITUDE IN DECIMAL DEGREES (WEST IS NEGATIVE): -110

SELECTING TWO NEAREST STATIONS...PLEASE WAIT

10 STATIONS SEARCHED
20 STATIONS SEARCHED
30 STATIONS SEARCHED
40 STATIONS SEARCHED
50 STATIONS SEARCHED
60 STATIONS SEARCHED
70 STATIONS SEARCHED
80 STATIONS SEARCHED
90 STATIONS SEARCHED
93 STATIONS SEARCHED

STATIONS SELECTED

ST JOHNS	SJN	0	34.52	-109.37	1753	AZ	US
WINSLOW MUN ARPT	INW	72374	35.02	-110.73	1488	AZ	US

ENTER 1 TO DISPLAY UNDECODED HOURLY DATA FOR SELECTED STATIONS.

ENTER 2 TO DISPLAY DECODED HOURLY DATA FOR SELECTED STATIONS.

ENTER 3 TO DISPLAY PLAIN-LANGUAGE DECODED HOURLY DATA FOR SELECTED STATIONS.

ENTER 1, 2, OR 3: 2

? BRIEF

Site Code: PEAC

Accu-Weather Data for the NRC Site : PEACH BOTTOM

This site is in PENNSYLVANIA FORECAST ZONE 65, EASTERN TIME ZONE

Latitude: N 39.76

Longitude: W 76.27

Elevation: 36 METERS (118 FT)

Primary Observations

distance: 64.9km, 35.0nm, 40.3mi

Bearing: 319.1 degrees

? HRD/P MDT 6

MOST RECENT DATA: 4pm est 7-MAR-96

MIDDLETOWN/H'BURG INTL ARP, PA (318')

LAT=40.2N LON= 76.8W

STA	TMP	DP	RH	WD	WS	G	PRS	ALT	PASQ	CLOUD LEVELS	HGT	TYP	VIS	WX
MDT 11am	34	33	96	050	10		102	2982	D		16	OVC	2	R-F
12pm	33	31	92	010	12		099	2981	D		6	OVC	2	R-F
1236				350	10			2980	D		8	OVC	2	ZR-F
1pm	32	31	96	350	10		092	2979	D		8	OVC	2	ZR-F
2pm	31	30	96	350	7		082	2976	D		9	OVC	2	ZR-IP-F
1434				310	14			2975	D		10	OVC	2	ZR-IP-F
3pm	28	28	00	320	13		078	2975	D		14	OVC	2	ZR-IP-F
1508				330	16			2975	D			X	1	S-F
4pm	26	26	00	320	22		082	2976	D	10 SCT	20	OVC	3	IP-F
1617				340	16			2977	D		20	OVC	3	F
1623				340	15			2977	D			X	2	F
1634				330	12			2977	D			X	1	ZL-F

MDT 6 temps: high= 34 at 11am low= 26 at 4pm mean= 30.6 precip= N/A

Secondary Observations

distance: 41.2km, 22.3nm, 25.6mi

Bearing: 356.5 degrees

? HRD/P LNS 6

MOST RECENT DATA: 5pm est 7-MAR-96

LANCASTER ARPT, PA (466')

LAT=40.1N LON= 76.3W

STA	TMP	DP	RH	WD	WS	G	PRS	ALT	PASQ	CLOUD LEVELS	HGT	TYP	VIS	WX
LNS 12pm	33	31	92	040	10			2979	D	-X	6	BKN	12	OVC
1220	33	31	92	030	12			2978	D		6	BKN	16	OVC
12pm	33	31	92	050	10			2976	D		8	SCT	32	OVC
1pm														
2pm	32	30	92	060	12			2971	D		6	BKN	30	OVC
3pm	32	30	92	050	12			2970	D		8	BKN	20	OVC
4pm	31	28	88	030	14			2964	D		-X	9	OVC	
1602				320	12	18		2973	D		-X	13	OVC	

LNS 4 temps: high= 33 at 12pm low= 31 at 4pm mean= 32.0 precip= N/A

Worded Forecast

? ZONE PHL 65 1

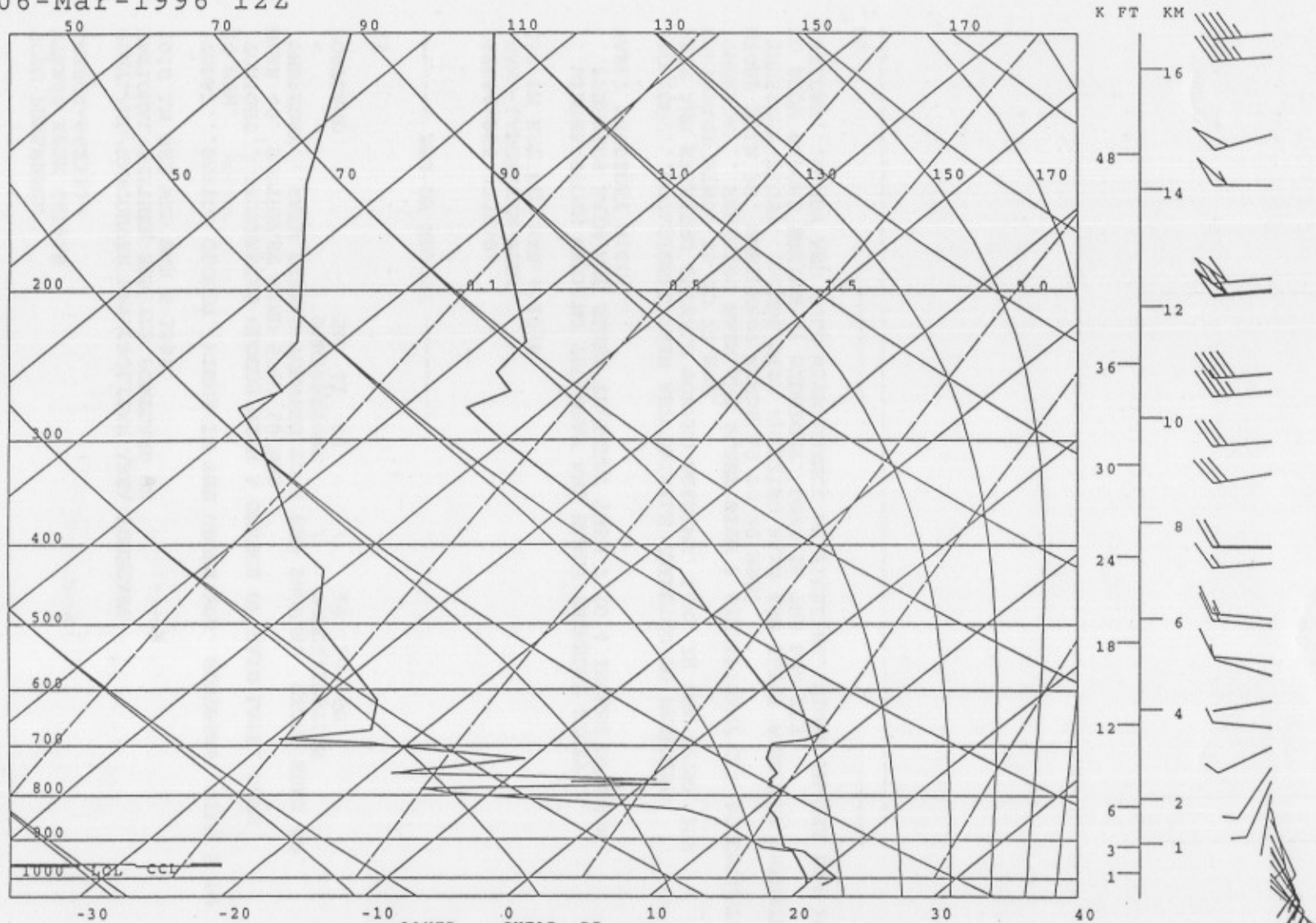
PA2064>066-080230-
ADAMS-LANCASTER-YORK-
300 PM EST THU MAR 7 1996

...WINTER STORM WARNING EARLY TONIGHT FOR ICE AND SNOW WITH TOTAL ACCUMULATION OF 3 TO 5 INCHES...

.TONIGHT...FREEZING RAIN...SLEET AND SNOW CHANGING TO ALL SNOW

Figure 8

06-Mar-1996 12Z



				LAYER	SHEAR	RI				
				(*100FT)	(KT/K FT)					
LCL:	968 MB	1433 FT ASL	65.7F	402 -404	19.0	0.8	KI :	1.9	TTI:	37.8
CCL:	963 MB	1577 FT ASL	66.5F	0 - 5	17.5	10.0	LI :	-0.1	EPA:	114.07 J/KG
LFC:	942 MB	2202 FT ASL	64.0F	5 - 10	13.5	2.9	SSI:	6.3	PW :	1.05 IN
FL :	596 MB	14672 FT AGL		246 -247	12.7	0.3	SI :	129.5	TH :	0 FT
WB0:	765 MB	7946 FT AGL	47.1F	30 - 39	7.8	19.7	CTI:	16.7	STC:	72.2 F
EL :	695 MB	10520 FT ASL	42.5F				VTI:	21.1	HSZ:	0.4 IN

72202 MIAMI/NATIONAL WEATHER SERVI, FL (3 FEET)

© ACCU-WEATHER, INC.

ZCZC PDXLFPPDX
 TTAA00 KPDX 061819
 ORZ004-062330-

PORTLAND/VANCOUVER METROPOLITAN AREA FORECAST
 NATIONAL WEATHER SERVICE PORTLAND OR
 1010 AM PST WED MAR 6 1996

.TODAY...PARTLY CLOUDY. HIGHS IN THE UPPER 50S. SOUTHEAST WIND 5 TO 10 MPH.

.TONIGHT...INCREASING CLOUDS WITH A CHANCE OF RAIN LATE. LOWS NEAR 40. SOUTHEAST WIND 5 TO 10 MPH.

.THURSDAY...RAIN LIKELY TURNING TO A FEW SHOWERS. HIGHS NEAR 60.

<	TEMPERATURE	/	PRECIPITATION
PORTLAND	56 41 58	/	10 30 60

\$\$

----- END OF REPORT -----

PAZ064>066-070230-
 ADAMS-LANCASTER-YORK-
 230 PM EST WED MAR 6 1996

...WINTER STORM WARNING THURSDAY AND EARLY THURSDAY NIGHT...
 ...FREEZING RAIN AND SLEET THURSDAY THEN 2 TO 4 INCHES OF SNOW
 EARLY THURSDAY NIGHT...

.TONIGHT...OCCASIONAL RAIN AND DRIZZLE CHANGING TO FREEZING
 RAIN AND FREEZING DRIZZLE TOWARD MORNING. LOWS IN THE UPPER 20S.
 NORTHEAST WINDS 10 TO 20 MPH.

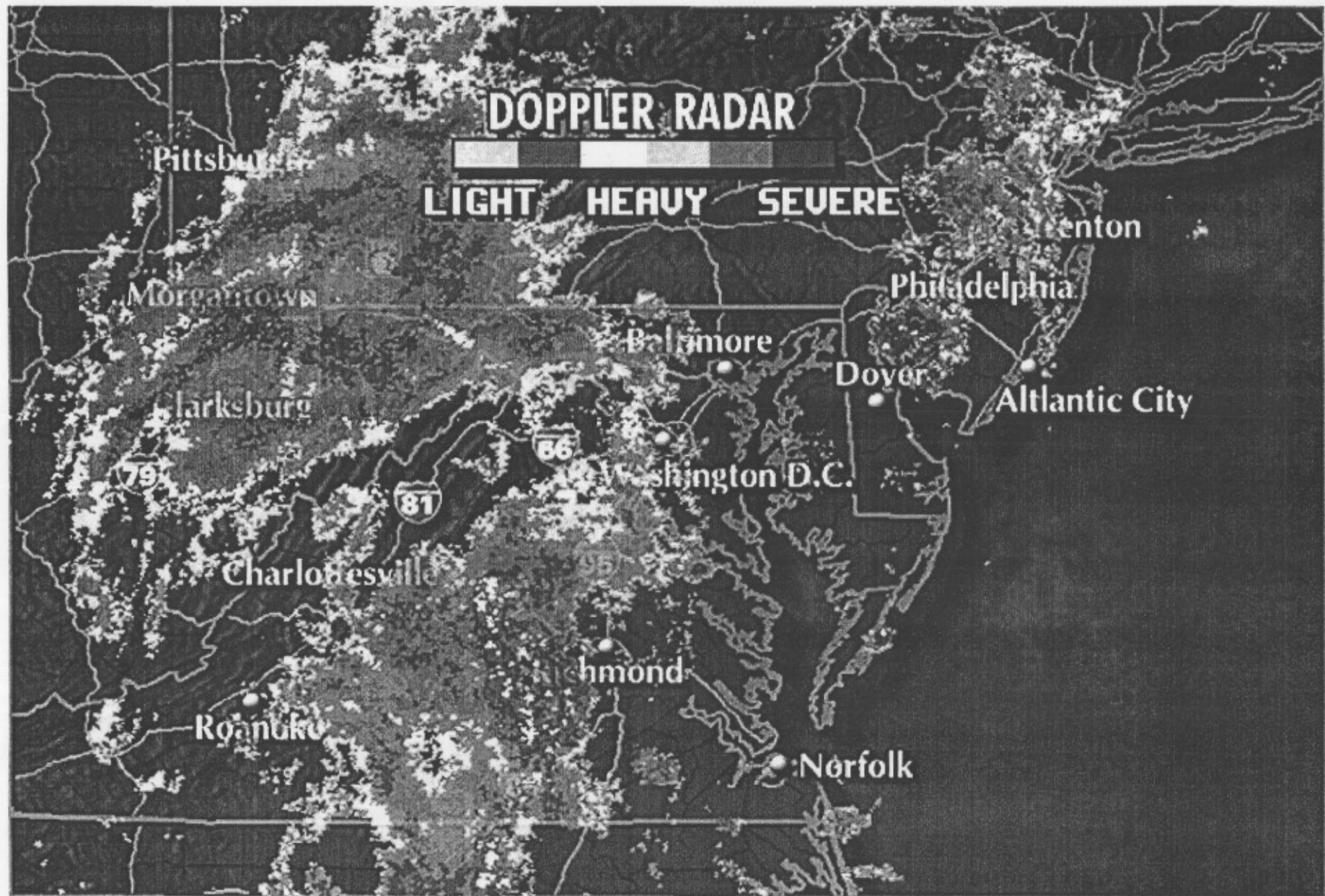
.THURSDAY...FREEZING RAIN AND SLEET WITH A SIGNIFICANT ICE ACCUMULATION.
 HIGHS NEAR 30. NORTHEAST WINDS 10 TO 20 MPH.

.THURSDAY NIGHT...WINDY WITH FREEZING RAIN AND SLEET POSSIBLY CHANGING
 TO SNOW BEFORE ENDING BY MIDNIGHT. LOWS IN THE LOW 20S.

.FRIDAY...WINDY AND COLD WITH CHANCE OF FLURRIES. HIGHS IN THE LOW 30S.

\$\$

Figure 10



NOV 1980 4 12 00 PM

NXR1 KVPSG V 1701Z07MAR

Figure 11

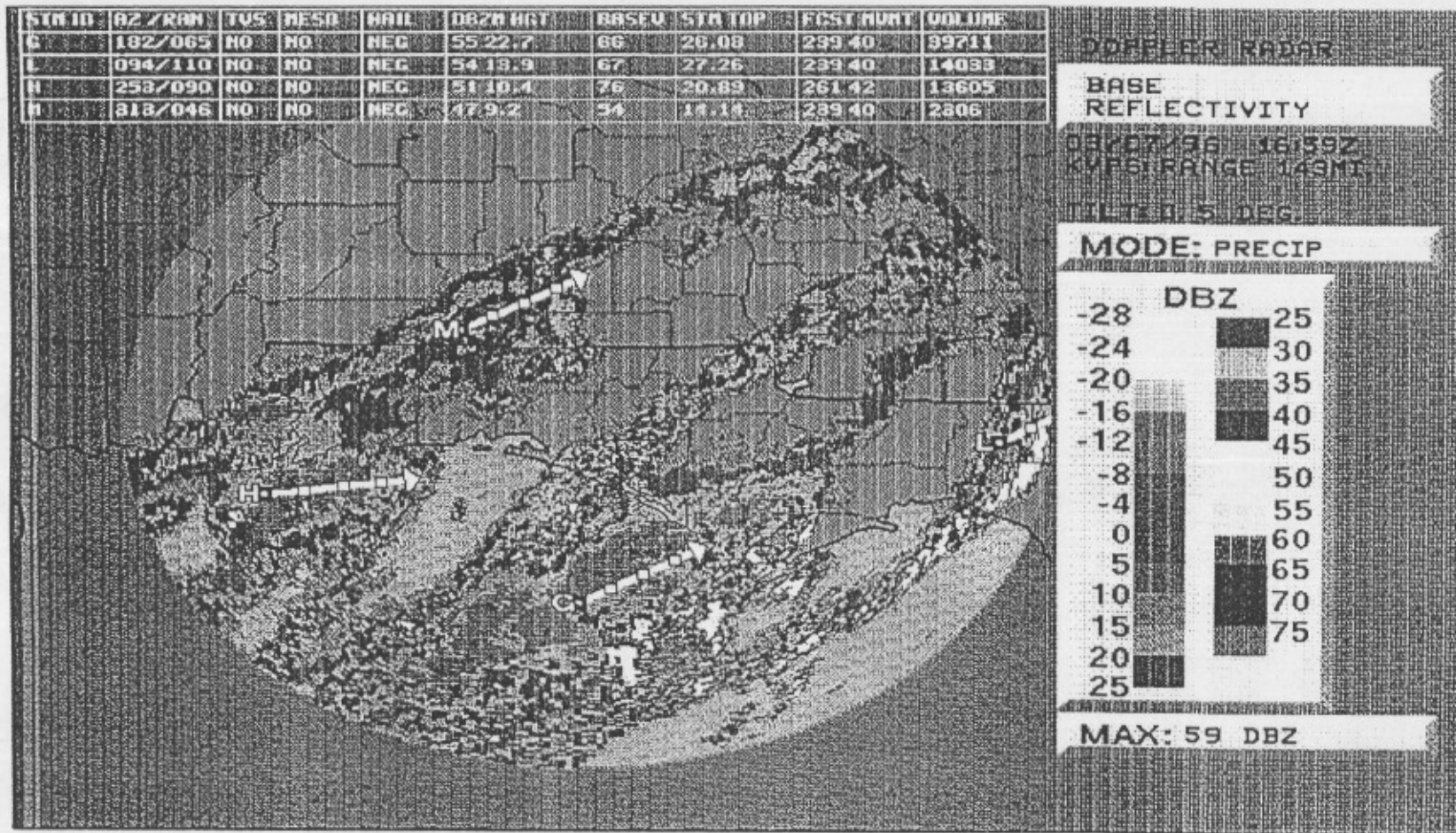
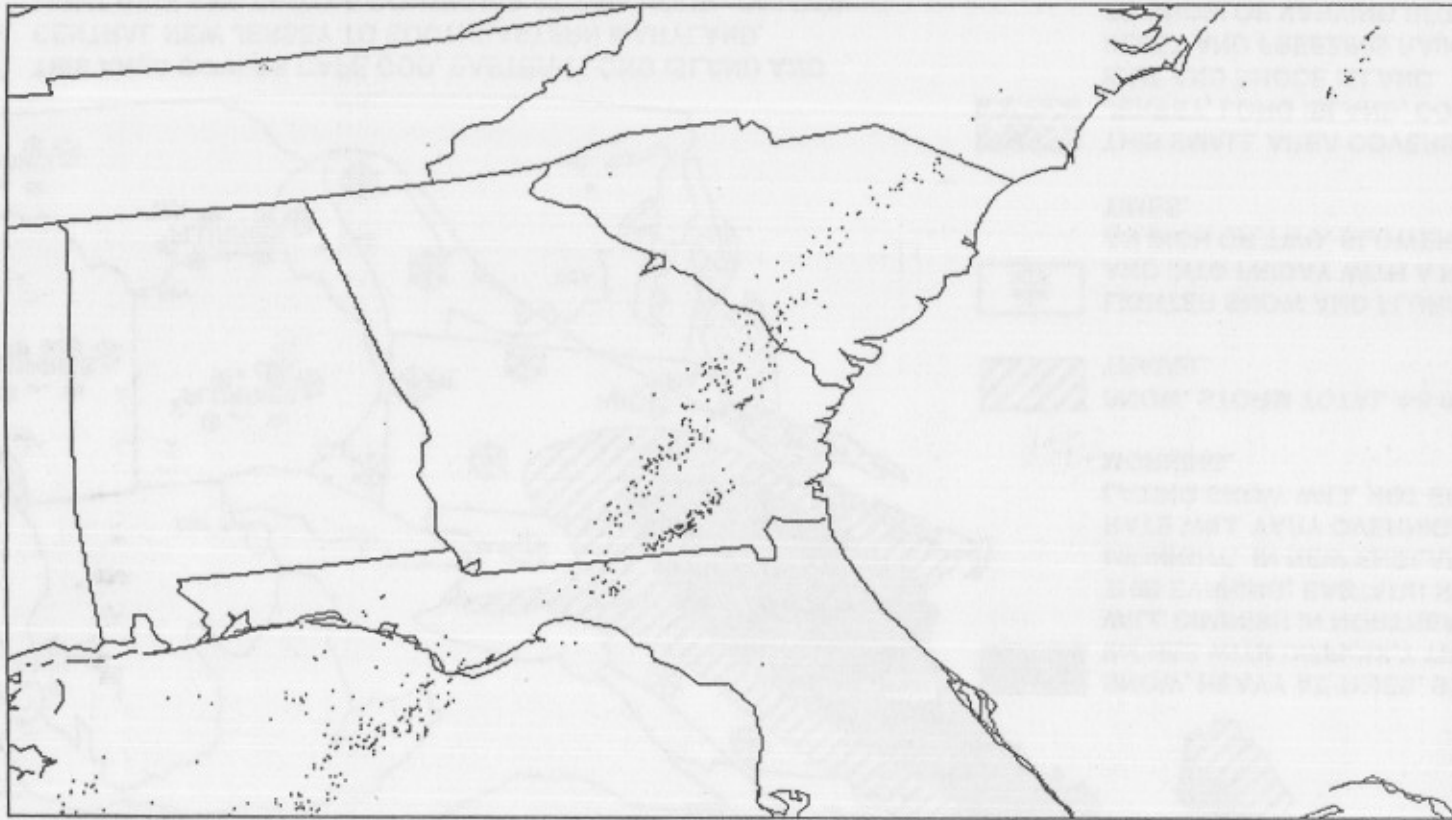


Figure 12

AMPS Window - 10



NEW STROKES

OLD STROKES

LIGHTNING STRIKES
1610Z - 1710Z 7-MAR-96

©1996 ACCU-WEATHER, INC.

REDISTRIBUTION PROHIBITED

PRESS <RETURN> TO CONTINUE

FIGURE 13

STORM PROGRESS REPORT

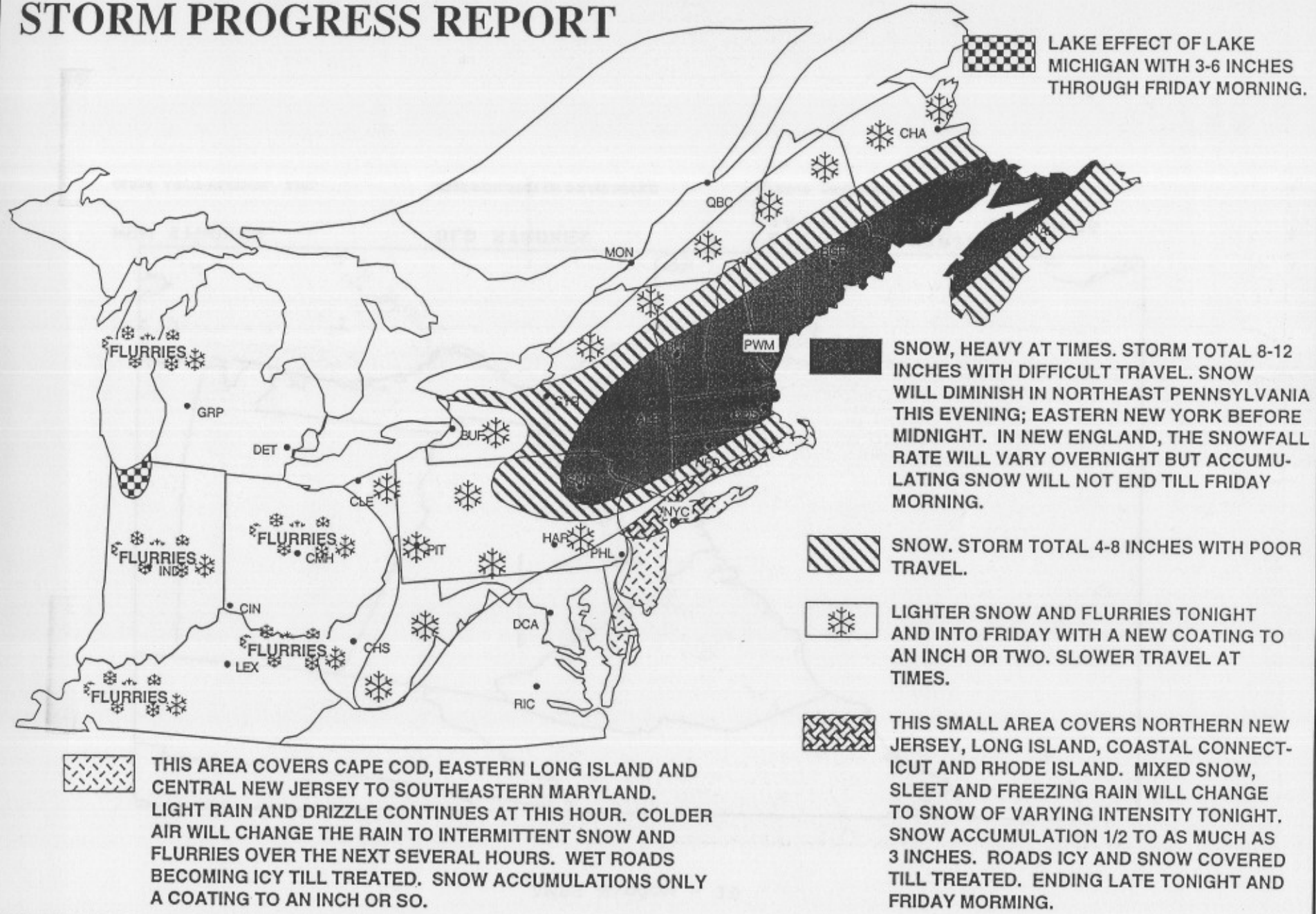
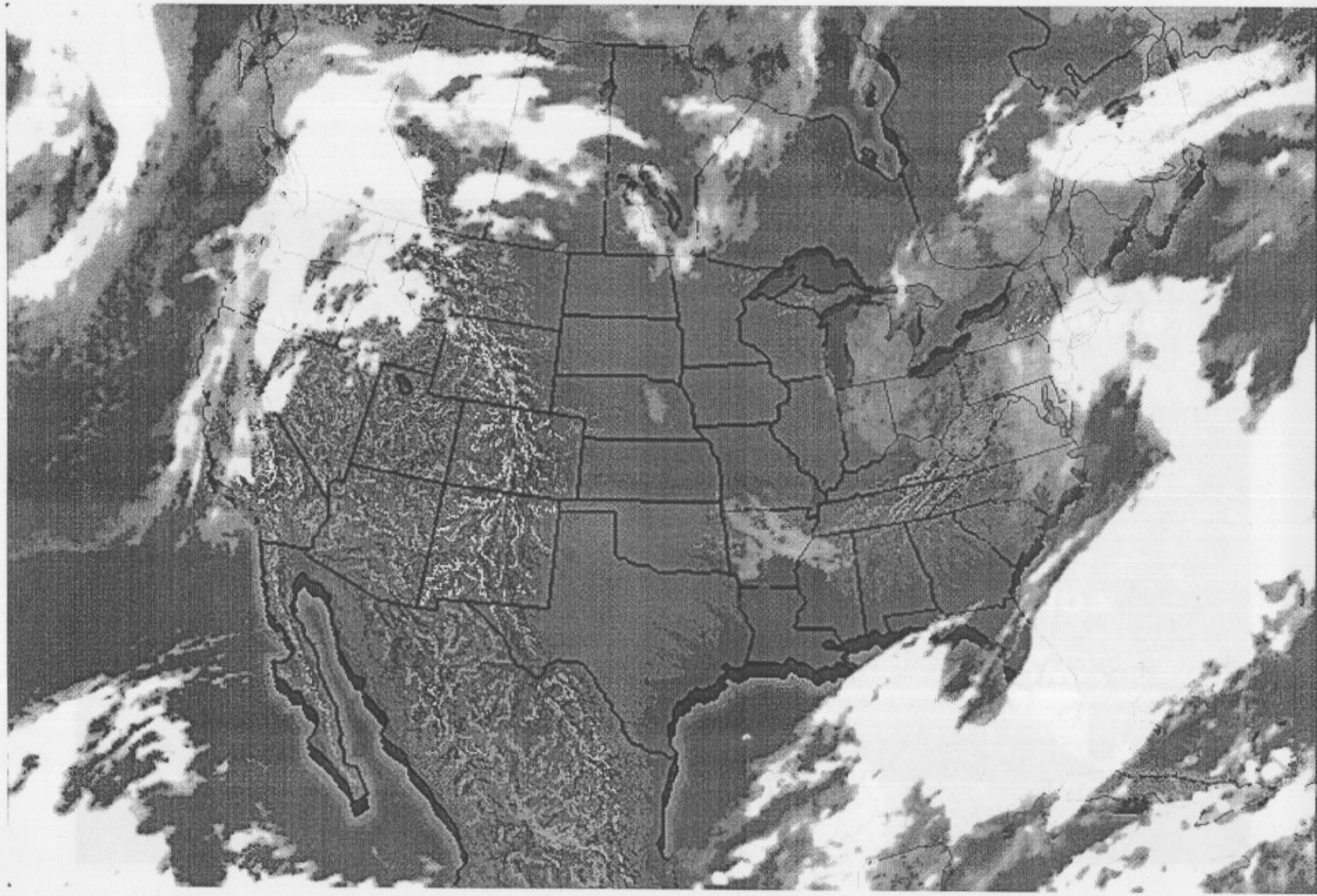
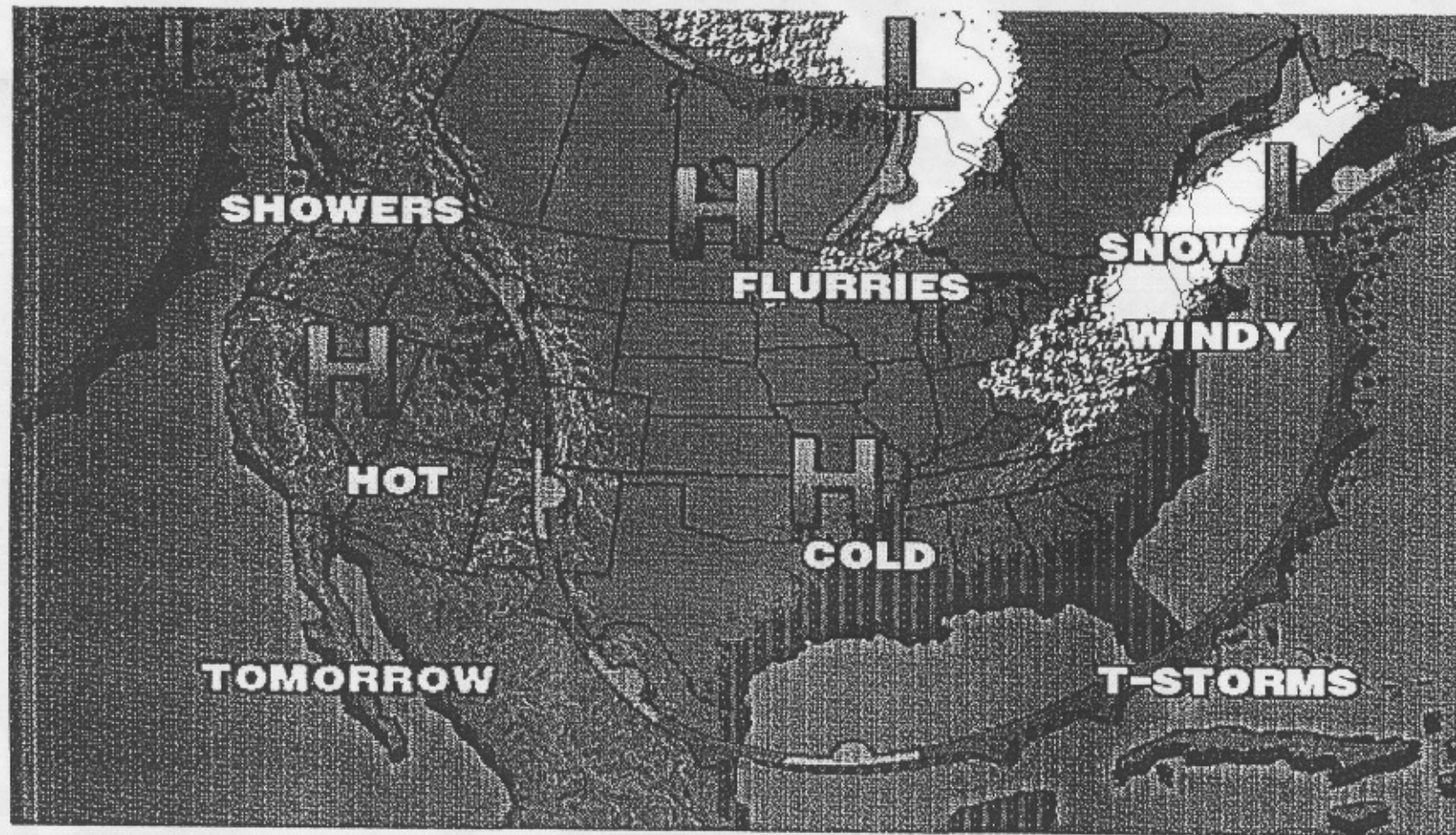


Figure 14



24SFC NAS 07MAR V 17Z08MAR III

Figure 15

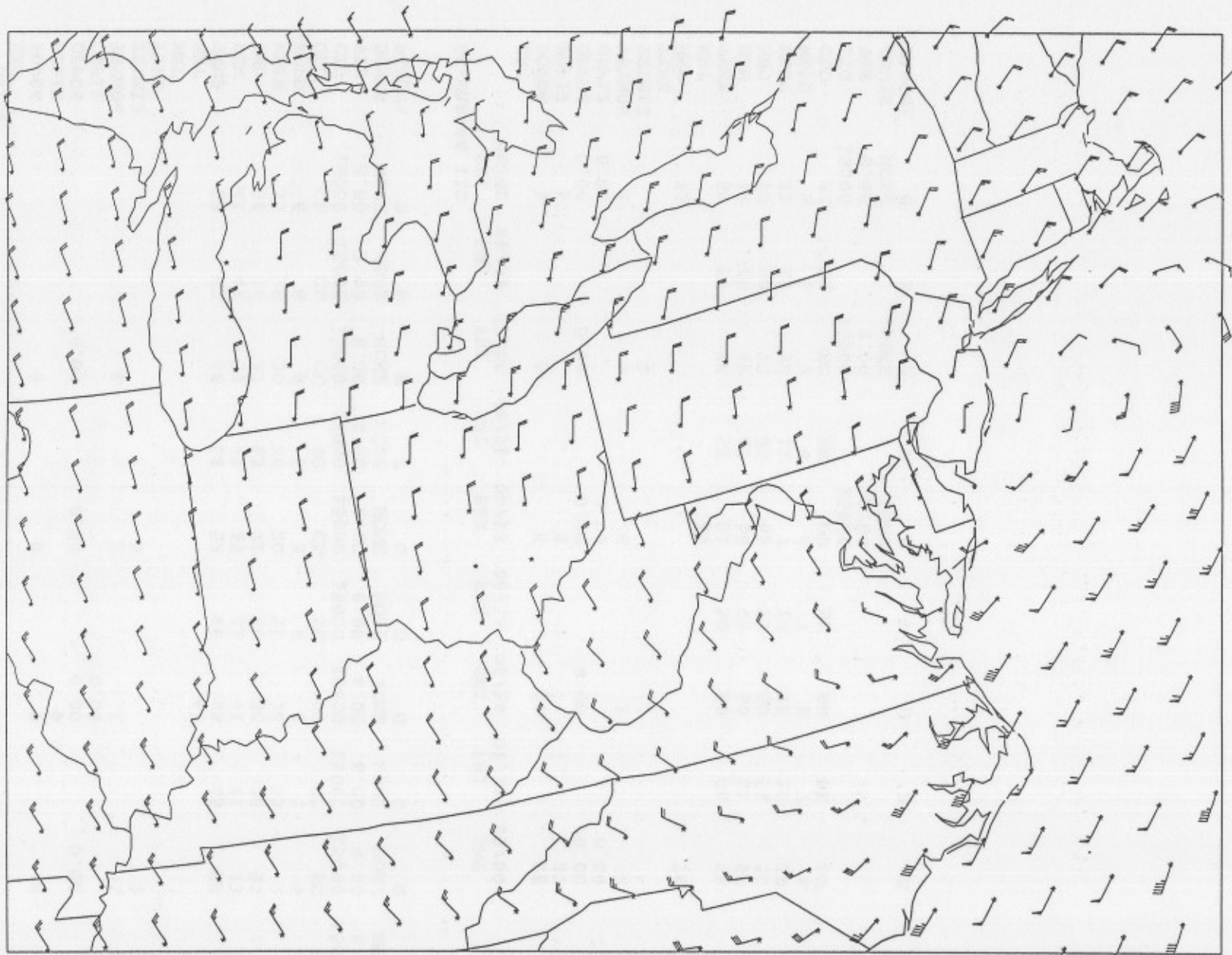


06-MAR-96 12Z		WED	WED	THU	THU	THU	THU	THU	THU	THU	THU
DY/HR											
SAC											
POP06			0			0		0			0
POP12								0			
QPF06			0.00			0.00		0.00			0.00
QPF12								0.00			
TSTM06			1			2		1			1
TSTM12						3					2
TYPE											
MXT											
MNT								43			
TEMP	52	62	66	58	52	48	45	45	59	67	
DEW	41	41	39	41	43	42	41	41	43	44	
RHU	66	46	37	53	71	80	86	86	55	43	
WDIR	33	29	30	26	20	15	36	13	2	17	
WSPD	6	6	8	5	3	2	2	1	6	6	
CLD	CL	CL	CL	SC	CL	SC	SC	SC	SC	SC	BK
CIG	15000	15000	15000	15000	15000	15000	15000	15000	15000	15000	15000
VIS	8.00	8.00	8.00	8.00	8.00	8.00	8.00	8.00	8.00	8.00	8.00
OBVIS	NONE	NONE	NONE	NONE	NONE	NONE	NONE	NONE	NONE	NONE	NONE
PASQUA	B	B	E	F	G	G	G	G	C	B	

06-MAR-96 12Z		FRI	FRI	FRI	FRI	FRI	FRI	FRI	FRI	SAT
	08/00	08/03	08/06	08/09	08/12	08/15	08/18	08/21	09/00	
SAC										
POP06	3		5		5		17		15	
POP12	1				5				22	
QPF06	0.00		0.00		0.00		0.00		0.00	
QPF12	0.00				0.00				0.00	
TSTM06	1		1		0		3		2	
TSTM12			1				3			
TYPE										
MXT	70								70	
MNT					49					
TEMP	68	59	56	53	51	50	60	68	68	
DEW	43	45	49	49	48	48	50	51	50	
RHU	40	60	77	86	89	93	69	54	52	
WDIR	23	19	30	11	7	14	15	18	19	
WSPD	5	5	7	6	6	7	8	7	6	
CLD	BK	BK	SC	BK	OV	BK	BK	BK	OV	
CIG	15000		15000		15000					
VIS	8.00		8.00		8.00					
OBVIS	NONE		NONE		NONE					
PASQUA	E	E	E	E	E	D	D	B	E	

06-MAR-96 12Z 3-MAR-96 (15000)
 3-MAR-96 12Z 3-MAR-96 12Z

Figure 17



NGM FINE MESH DATA 925 MB
VALID 00Z 8-MAR-96 (12HR)
BASED ON 12Z 7-MAR-96 FCST

ACCU-WEATHER FORECAST
EXCLUSIVELY FOR SOUTH JERSEY GAS COMPANY

DAY: WEDNESDAY
DATE: 10-APR-96
TIME: 11:25 AM
FORECASTER: JS

WEDNESDAY	MAX	MIN	AVG	TIME								
				08	11	14	17	20	23	02	05	08
TEMPERATURE	45	34	38.7	35	40	43	44	39	37	36	35	38
WIND DIRECTION			NW	WNW	W	NW	NW	NW	WNW	WNW	WNW	WNW
WIND SPEED (MPH)			15.1	14	17	22	22	15	12	12	10	12
CLOUD COVER (TENTHS)				10	10	7	6	4	2	1	0	0
PROB OF PRECIP (%)				60	40	30	30	10	0	0	0	0
TYPE OF PRECIP				S-	-	-	-	-	-	-	-	-

WEATHER:
WINDY AND COLD TODAY WITH SUNSHINE AND CLOUDS, PERHAPS A FLURRY.
CLEARING, BRISK AND COLD TONIGHT.

THURSDAY	MAX	MIN	AVG	TIME								
				08	11	14	17	20	23	02	05	08
TEMPERATURE	58	38	50.5	38	47	57	57	55	53	51	49	52
WIND DIRECTION			W	WNW	WNW	W	W	W	WSW	WSW	WSW	WSW
WIND SPEED (MPH)			12.6	12	15	18	18	12	12	10	8	8
CLOUD COVER (TENTHS)				0	0	0	2	4	4	4	4	4
PROB OF PRECIP (%)				0	0	0	0	0	0	0	0	0
TYPE OF PRECIP				-	-	-	-	-	-	-	-	-

WEATHER:
SUNNY TO PARTLY CLOUDY, WINDY AND BECOMING MILDER.

FRIDAY	MAX	MIN	AVG	SATURDAY	MAX	MIN	AVG
TEMPERATURE	76	48	62.0	TEMPERATURE	68	42	55.0
WIND DIR/SPEED		SW	12	WIND DIR/SPEED		NE	10

WEATHER:
BREEZY AND WARM WITH SOME
SUNSHINE.

WEATHER:
NOT AS WARM, BUT STILL PARTLY
SUNNY.

SUNDAY	MAX	MIN	AVG	6-10 DAY	MAX	MIN	AVG
TEMPERATURE	62	42	52.0	MON TO FRI	66	42	54.0

Copyright Accu-Weather, Inc. 1996

Phone: 814-237-5803 ext. 11

ACCU-WEATHER INC.

814-237-5803 EXT. 11

Figure 19

GOES INTO EFFECT:

DATE: _____ DAY: _____

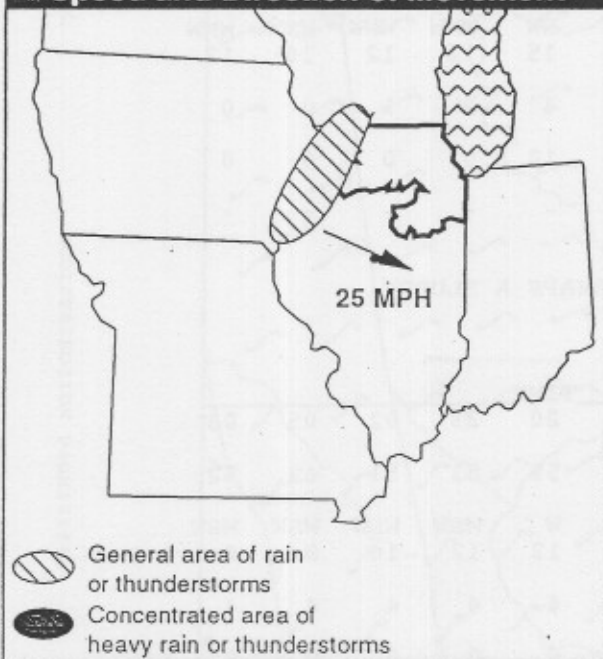
TIME: _____ FCSTR: _____

TRANSMITTED:

DATE: _____ SENT BY: _____

TIME: _____ REC'D BY: _____

MAP A - Current Weather with Speed and Direction of Movement



REGION: WESTERN

CRITERIA:
WINDS SUSTAINED 30 MPH OR GREATER AND GUSTS 40 MPH OR GREATER, HEAVY RAIN, ANY THUNDERSTORM

STATUS: (check one box)

- ALERT (Threatening weather more than 1 hour away)
- ALERT PROGRESS REPORT (Update to previous ALERT)
- WARNING (Threatening weather imminent or in progress)
- WARNING PROGRESS REPORT (Update to previous WARNING)
- ALL CLEAR (Threat of severe weather has ended)

WEATHER TYPE: (check box(s))

- HIGH WINDS
- HEAVY RAIN
- THUNDERSTORMS

Most probable intensity level during worst of thunderstorm: (check one)

Level	Level	Level	Level	Level
<input type="checkbox"/> 1	<input checked="" type="checkbox"/> 2	<input type="checkbox"/> 3	<input type="checkbox"/> 4	<input type="checkbox"/> 5

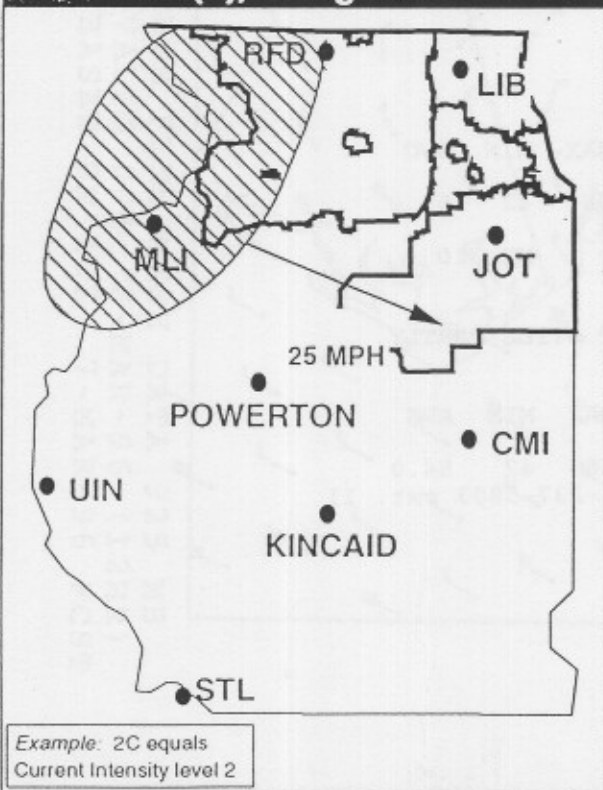
30 % chance of intensity level as high as: (check one)

Level	Level	Level	Level	Level
<input type="checkbox"/> 1	<input type="checkbox"/> 2	<input checked="" type="checkbox"/> 3	<input type="checkbox"/> 4	<input type="checkbox"/> 5

Additional Information:

A LINE OF SHOWERS AND THUNDERSTORMS HAS MOVED INTO THE WESTERN REGION. THE THUNDERSTORMS CONTAIN CLOUD TO GROUND LIGHTNING, HEAVY DOWNPOURS, AND WIND GUSTS TO 45 MPH. THE LINE OF SHOWERS AND THUNDERSTORMS TO MOVE TOWARD THE SOUTHEAST AT 25 MPH AND WILL LEAVE THE WESTERN REGION WITHIN THE NEXT 60 TO 90 MINUTE

MAP B - Intensity levels, Expected (E) or Current (C), during worst of storm



Emergency weather notices are issued by the government through the public media. Keep apprised of these notices and call Accu-Weather if you have any questions or need clarifications.

205 ©1993Accu-Weather, Inc., 619 W. College Ave., State College, PA 16801

SC-CEC020493