

*AMS Commission on the  
Weather and Climate Enterprise  
(CWCE): Activities of Interest to  
NUMUG*

**Matthew J. Parker, CCM  
Future Commissioner (2012), CWCE  
Fellow Meteorologist  
Savannah River National Laboratory**



**Len Pietrafesa, Commissioner, NC State University (retired)  
Joe Friday, Past-Commissioner, U of Oklahoma, NWS (retired)**

# FAIR WEATHER

Effective Partnerships in Weather and Climate Services

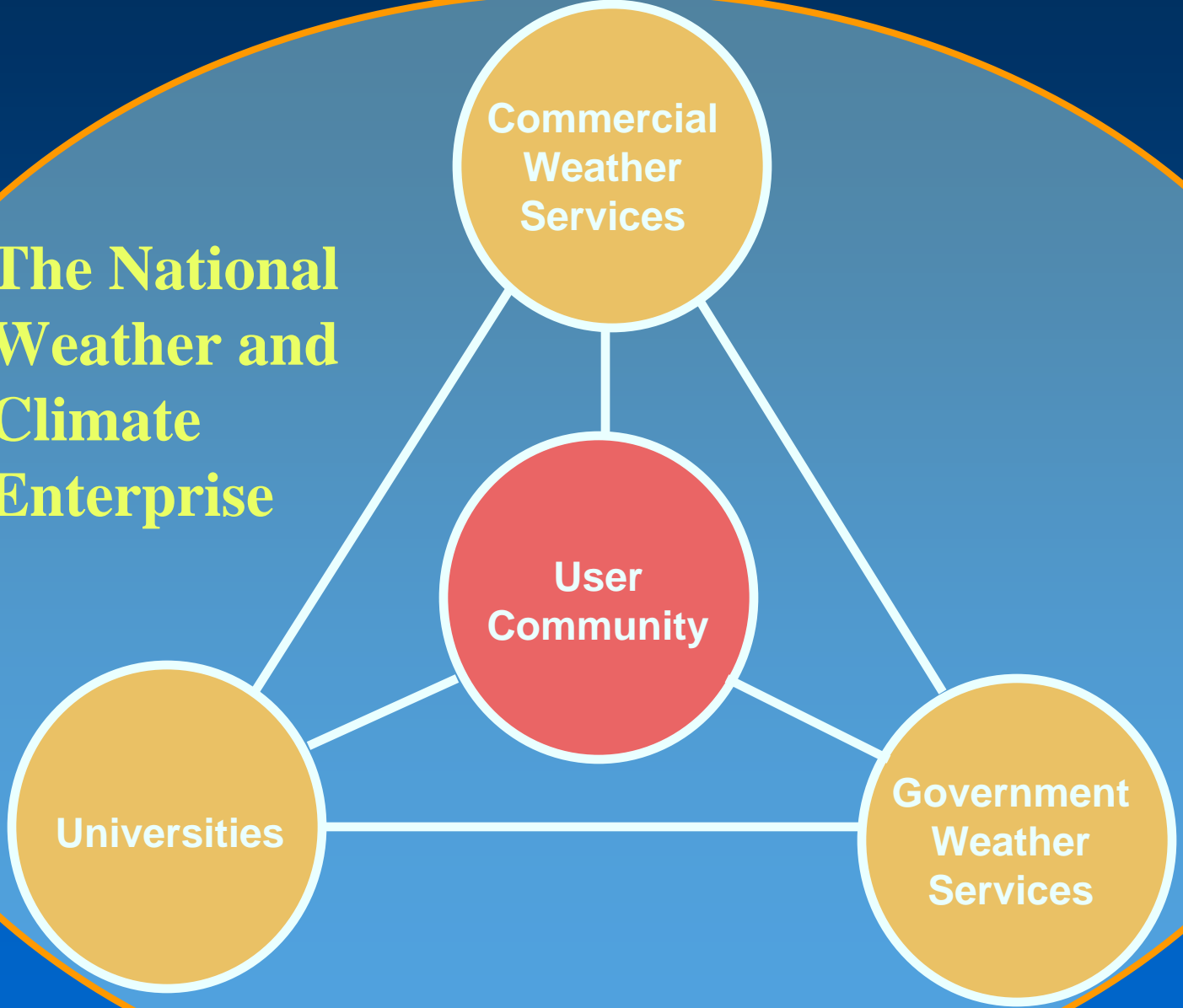
NATIONAL RESEARCH COUNCIL  
OF THE NATIONAL ACADEMIES

- **Report Contained 11 recommendations**
- **Recommendation 3**
  - *The NWS and relevant academic, state, and private organizations should seek a **neutral host**, such as the **American Meteorological Society**, to provide a **periodic dedicated venue** for the weather enterprise as a whole to discuss issues related to the public-private partnership.*

# Goals

- The Commission provides **venues** for enterprise participants to meet and discuss issues of importance to the enterprise. All **findings and reports** resulting from Commission activities are **directed to the AMS Council**.
- The Commission and its activities **facilitate dialogue** between enterprise participants.
- Commission activities **operate within the overall mission of the American Meteorological Society** as a scientific and professional society.

**The National  
Weather and  
Climate  
Enterprise**



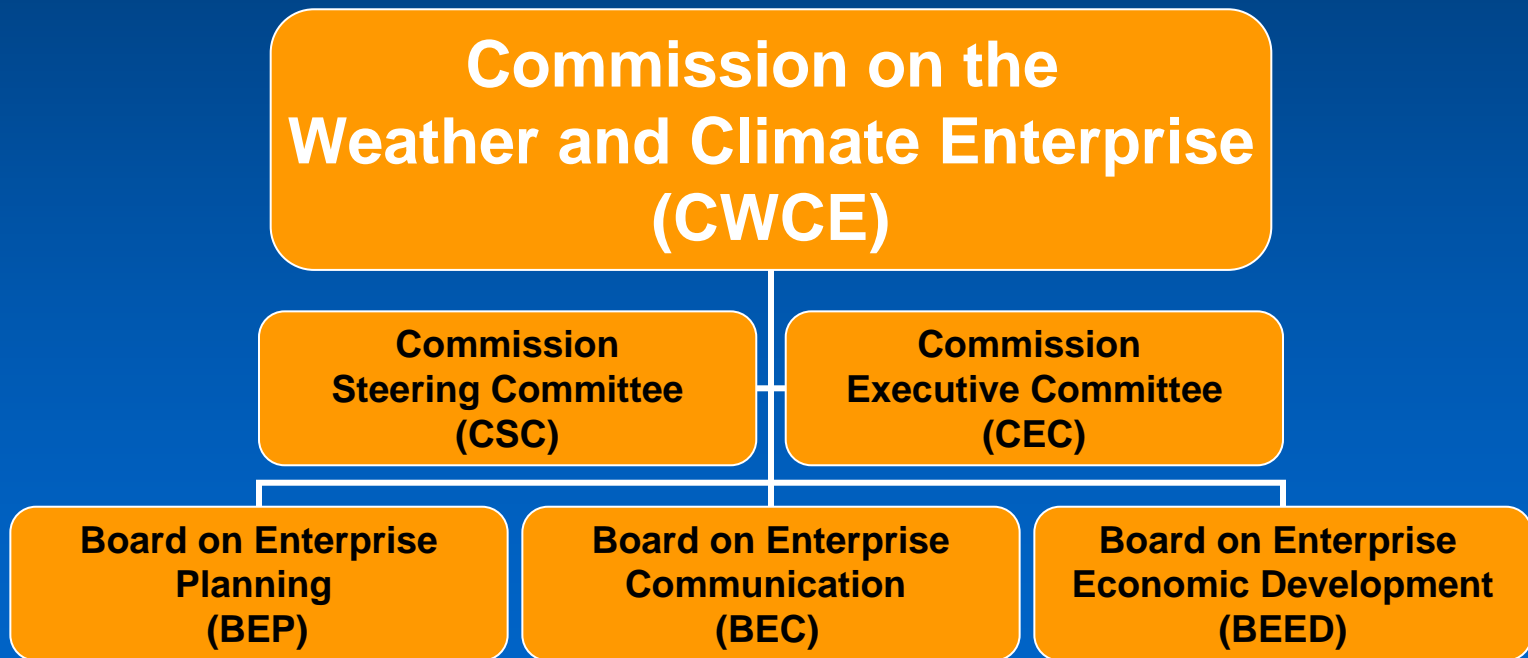
# The Enterprise Commission

- Provides venues for discussion
  - *Not* a federal advisory committee
- Facilitates dialog between enterprise participants
  - *Not* a mediator or adjudicator of disputes
- Operates within Society's mission
  - *Not* a trade association

# On Being a Neutral Host

- We must not compromise our ability to be a neutral host for enterprise discussions
- *Balance* is an important key
  - Committee and board appointments
  - Council composition
  - How we seek input and act on it

# Overview of the AMS Commission on the Weather and Climate Enterprise



# **Board on Enterprise Communication**

**Chair, Veronica Johnson – NBC4 in  
Washington, DC**

**Chair-Elect, Betsy Weatherhead, U of  
Colorado**

**“The BEC provides appropriate venues to bring together the provider and user communities to learn about, discuss, and provide input concerning issues of a short-term nature identified by the Steering Committee.**

**Venues may take a wide variety of formats, including workshops, special symposia, and conference sessions, depending on the nature and time-sensitivity of the topic to be discussed.”**



# BEC Initiatives

- AMS Summer Community Meeting (annual event)
- August 8-11, Boulder, CO
- **THEME:** *Building a Stronger Weather and Climate Enterprise Keeping the Economy Moving*
- Network of Networks – (CWCE Committee, George Frederick, Chair)
- Economic value of weather
  - Transportation data needs
  - Renewable energy (offshore wind and solar energy)
  - Environmental Information Services Working Group (EISWG) of NOAA's Science Advisory Board
  - Carbon and greenhouse gas information products
  - Human health
  - Hydroclimate with emphasis on drought and floods

# BEC Initiatives

- Committee on Climate Services – Chair, Ed O’Lenic (Director, NOAA Climate Prediction Ctr)
  - Active with webinars and other mechanisms
  - AMS Policy Statement on Climate Services
    - Member selection
    - Draft outline
    - Fast-track (less than 1 year)

# BEC Initiatives

- Climate Change – Improving Communication Committee (Co-Chairs, Andrea Bleistein, NWS, Ray Ban, Consultant to TWC, Paul Croft, Kean U)
  - New initiative – TOR being finalized
  - First meeting held in Seattle at AMS Annual Mtg
  - Update in DC (AWF – more on that later)
  - Set to meet in Boulder
  - Two working groups – Energy and Professional Affairs
  - Possible collaboration with similar activities at George Mason U.

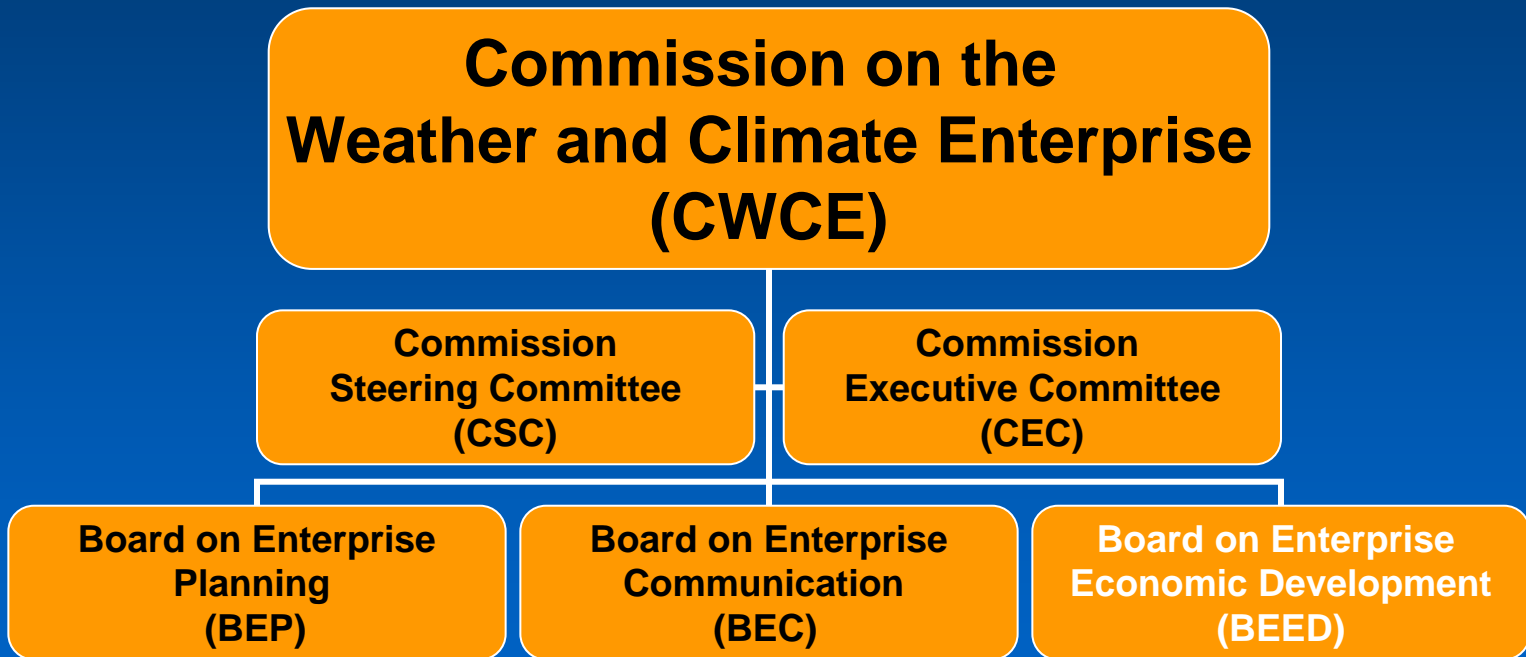
# BEC Initiatives

- Session at AMS 7<sup>th</sup> Symposium on Policy and Socio-Economic Research to be held at the AMS Annual Meeting in New Orleans (Jan 2012)
  - Topic – discuss the economic value of all weather and climate endeavors and activities in the public, private and academic sectors
  - Precursor to likely 2012 Summer Community Meeting theme

# Recent Major BEC Tasks

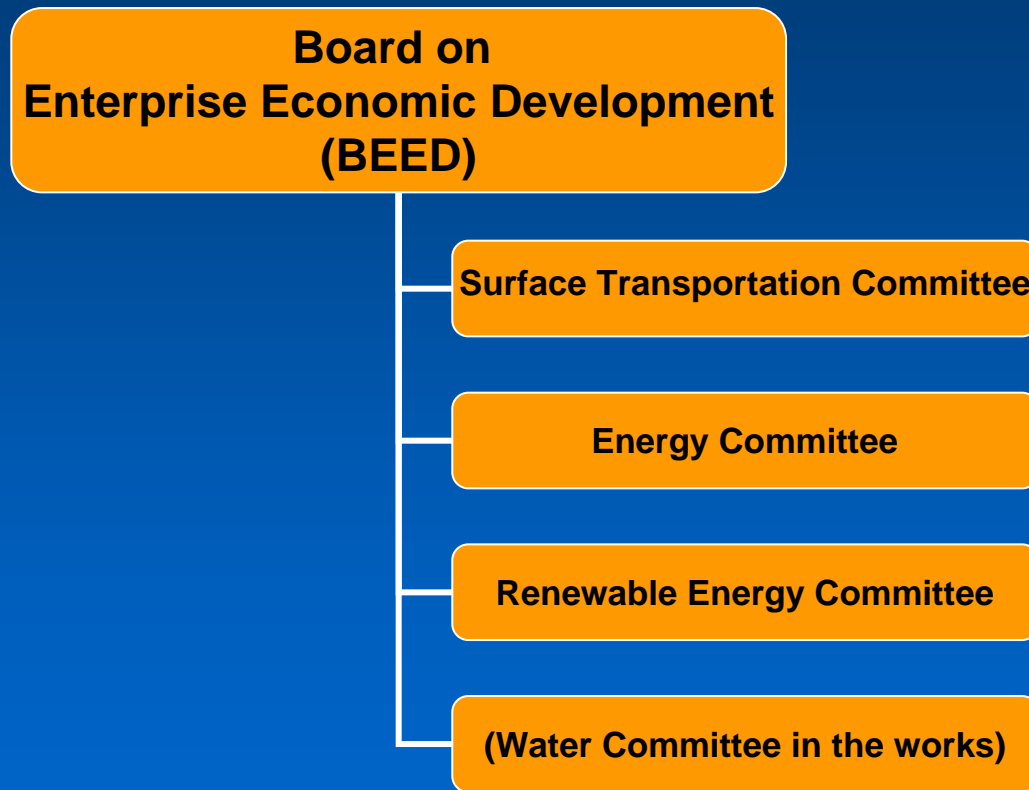
- Co-Chaired effort to write the AMS Policy Statement on National Weather and Climate Priorities (2008)
- Ad Hoc Committee on Uncertainty in Forecasts released final report (2010)

# AMS CWCE



# BEED Organization

External Focus



# Mission

To promote growth in the economic base of the weather and climate enterprise by outreach to user communities.

# History

Prior to the formation of the Commission, the BEED was the AMS Economic Development Committee, which reported to the AMS Executive Committee.



# AMS Washington Forum

Brings together members of the private/commercial sector, government agencies, and policy makers, to discuss budgets, programs, business opportunities, new initiatives, and policy issues.

## **April 2011 Meeting highlights**

- Federal budget analysts and leaders
- Climate assessment/climate services/CCIC
- FAA NextGen and NWS 4-D Data Cube
- Renewable energy
- NoN
- Business models for work between sectors

# Energy Committee

Members represent a broad range of organizations including renewable energy, trading, electrical, university, oil, and private sector weather providers.

Focus on promoting growth in the economic base of the weather and climate community

- Closely interacting with the energy industry to the benefit of all parties.
- Identify synergistic opportunities for collaboration and business.

***Third Conference on Weather, Climate, and the New Energy Economy at 2012 AMS Annual Meeting in New Orleans (January) (USERS FORUM)***

# BEP Charter

- Review issues identified by the Steering Committee that are of long-term strategic nature with importance to the enterprise as a whole
- Focus on a selected topic annually
  - **Annual Partnership Topic**
  - Working Group for a specific topic
  - Annual Report to Steering Committee

# Active APTs

- APT Committee on Mobile Observations
- The Mobile Observations APT is focused on the application and utilization of future vehicle based surface weather and road condition observations. The US Department of Transportation wireless vehicle technology development program is now called IntelliDriveSM. This APT will discuss mobile weather datasets associated with IntelliDriveSM and those that may become available outside of that program.
  - Bill Mahoney (Co-Chair) - National Center for Atmospheric Research (NCAR)
  - Jim O’Sullivan (Co-Chair) - National Oceanic and Atmospheric Administration (NOAA)

# Active APTs

- APT Committee on Offshore Wind
- The Offshore Wind Energy Committee have an overarching charge to define the need and recommend expansion of meteorological and oceanographic data required to support studies of the wind resource and conditions relevant to wind farm development in offshore locations.
  - Bruce Bailey (Co-Chair) - AWS Truepower
  - David Green (Co-Chair) - NOAA/NWS

# Active APTs

- APT Committee on Integrated Water Resources
- Draft TBD - The “Integrated Water Resources APT Committee” has the overarching charge to review the generation, application and benefits of new and enhanced water resources information.
  - Ana Barros (Co-Chair) – Duke University
  - George Smith (Co-Chair) - Riverside

# Ad Hoc Committee on Environmental Security

- "Environmental security can be thought of as a process for understanding how the affects of extreme environmental or climatic events, acting locally or trans-nationally, can destabilize countries or regions of the world, resulting in geopolitical instability, resource conflicts, vulnerabilities in critical infrastructure, or a combination of these."
  - Chair, John Lanicci, Embry Riddle Aeronautical University
  - 6<sup>th</sup> (2011) and 7<sup>th</sup> (2012) Symposium on Policy and Socio-Economic Research
  - Educational outreach – workshops, academia

# Ad Hoc Committee on Network of Networks

- Follow-on of NRC report “Observing Weather and Climate from the Ground Up”
  - Chair, George Frederick, Falcon Consultants
  - Report generated
    - Metadata
    - Proprietary data
    - Logistics / databases
    - Access
    - Etc – this is big project!
    - Summer Meeting theme – 2011 Boulder



# ***AMS Commission on the Weather and Climate Enterprise***

**Matthew J. Parker, CCM  
Fellow Meteorologist  
Atmospheric Technologies Group  
Savannah River National Laboratory  
Washington Savannah River Company  
Bldg. 735-7A  
Aiken, SC 29808**

**(803) 725-2805**

**email: [matt.parker@srnl.doe.gov](mailto:matt.parker@srnl.doe.gov)**

**[www.srnl.doe.gov/atq](http://www.srnl.doe.gov/atq) and [www.srs.gov/weather](http://www.srs.gov/weather)**

**<http://www.linkedin.com/pub/matthew-parker/1a/1b0/b66>**

